

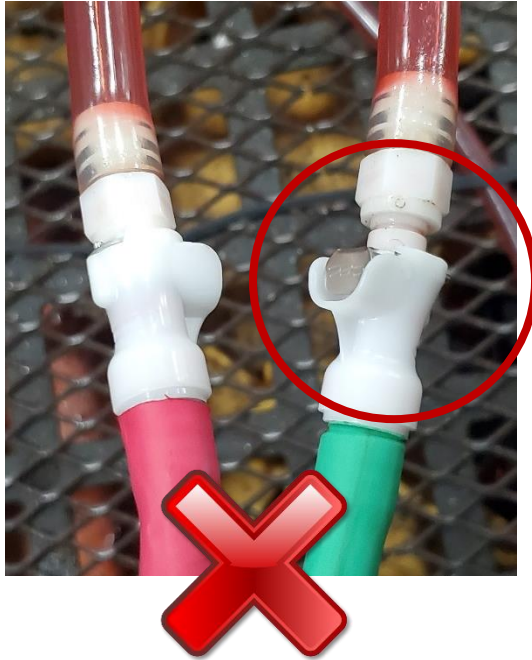


# 8700 POWER STEERING TROUBLE SHOOTING AID

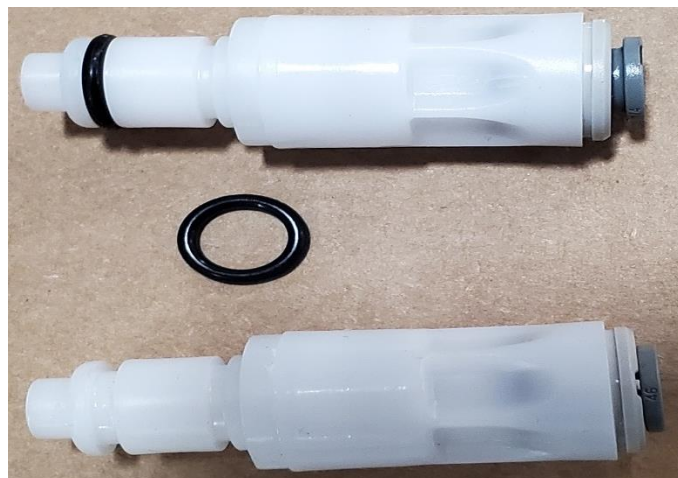
## TRUBLE SHOOTING GUIDE

| Problem  | Cause   | Solution  |
|--|---|---|
| <b>Machine will not power up</b>   | Power Cable ends broken   | Check the ends of the Power Cable to make sure the wire has not been pulled or broken from the battery clamp.   |
|  | Circuit Breaker tripped   | Machine is equipped with a resettable 10 amp breaker. If tripped the button will protrude and will need to be pressed back in.  |
| <b>New Fluid Pump not working</b>  | No Fluid In Bottle  | Make sure that whichever bottle you are pumping from is full and the bottle selector valve is turned to correct bottle position.  |
|  | Service Hose connectors   | Check the ends of the service hoses to make sure that the quick connects are properly installed together. Refer to <b>Section 1</b> .   |
|  | Pump runs but no fluid transfer   | Flush and prime the pump. Refer to <b>Section 2</b> .   |
|  | Pump does not run   | Check to make sure that the Green light on the panel comes on when depressing the white remote button. Turn the "ADD" fluid switch on the panel to "ON" positions. If pump runs and green light comes on, a new remote needs to be ordered. |
| If turning the switch to the on position, the green light comes on and pump still does not run, a new pump is needed. If light does not come on, a new switch may be needed. |   |   |
|  | Remove the four screws from the waist of machine and check connections to the switch and pump. Making sure wires were not disconnected. |   |
| <b>Evac Pump not working</b>   | Service Hose connectors   | Check the ends of the service hoses to make sure that the quick connects are properly installed together. Refer to <b>Section 1</b> .   |
|  | Pump runs but no fluid transfer   | Flush and prime the pump. Refer to <b>Section 2</b> .   |
|  | Pump does not run   | Check to make sure that the Red light on the panel comes on when depressing the red remote button. Turn the "EVAC" fluid switch on the panel to the "ON" positions. If pump runs and red light comes on, a new remote needs to be ordered.  |
|  |   | If turning the switch to the on position, the red light comes on and pump still does not run, a new pump is needed. If light does not come on, a new switch may be needed.  |
|  | Remove the four screws from the waist of machine and check connections to switch and pump. Making sure wires were not disconnected.     |   |

1. Check end of service hoses, to make sure that quick connects are connected properly
2. If they look like they are, go ahead and remove and reconnect.

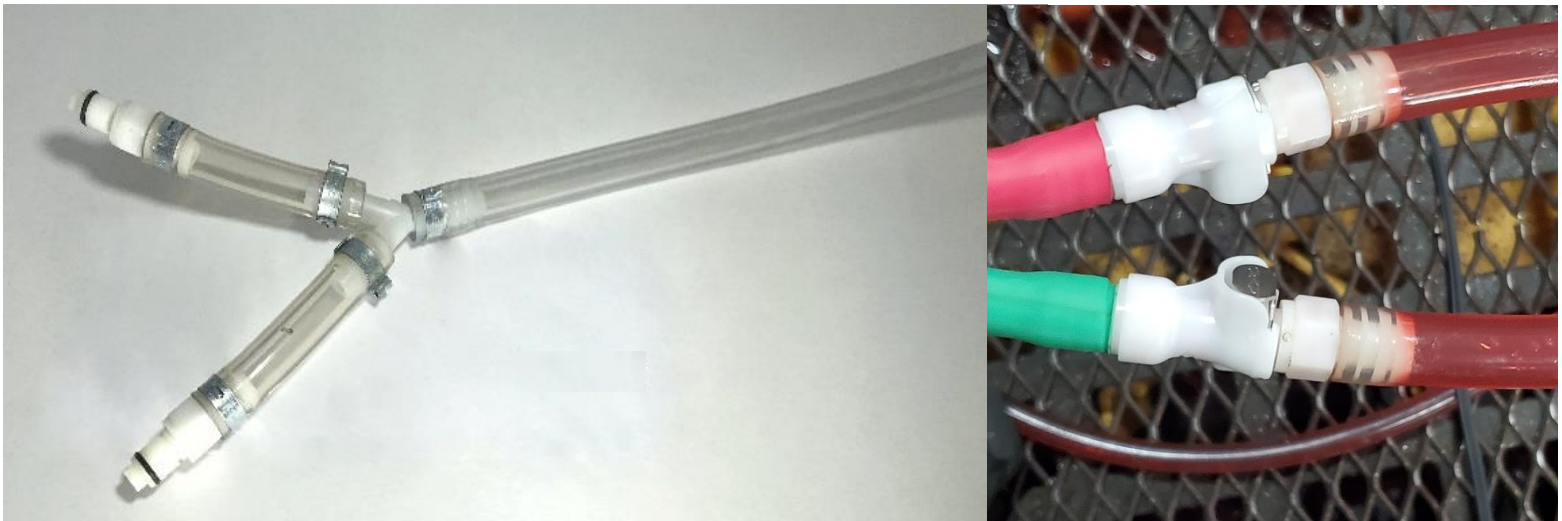


3. Check and make sure that the O-Ring on the male connector is not cut or missing. If so, replace with a size 011 Buna O-Ring.

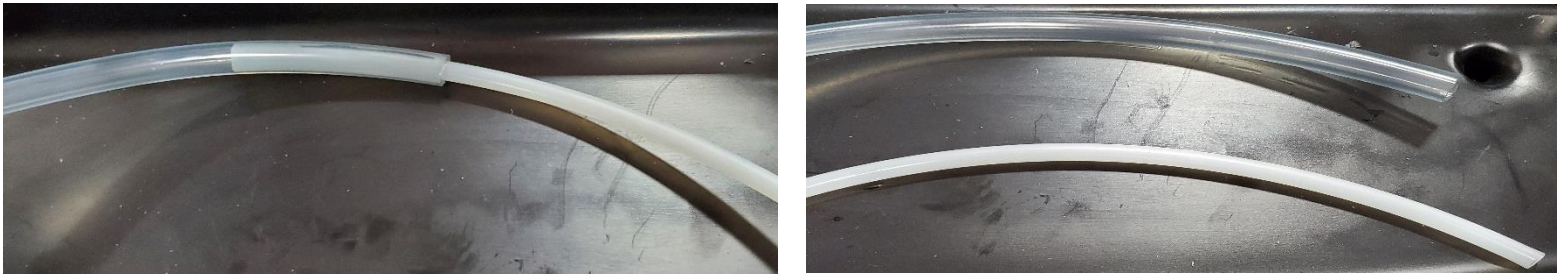


Notes: This works for which ever pump is running but not moving fluid to determine if there is build up on the pump or if it has lost prime.

1. Connect Machine to Power.
2. Connect a bottle of Power Steering fluid.
3. Set machine up as if you were going to run a service.
4. Hook the "Y" adapter to the end of the service hoses.



5. Remove Nylon tube from the end of "Y" adapter.



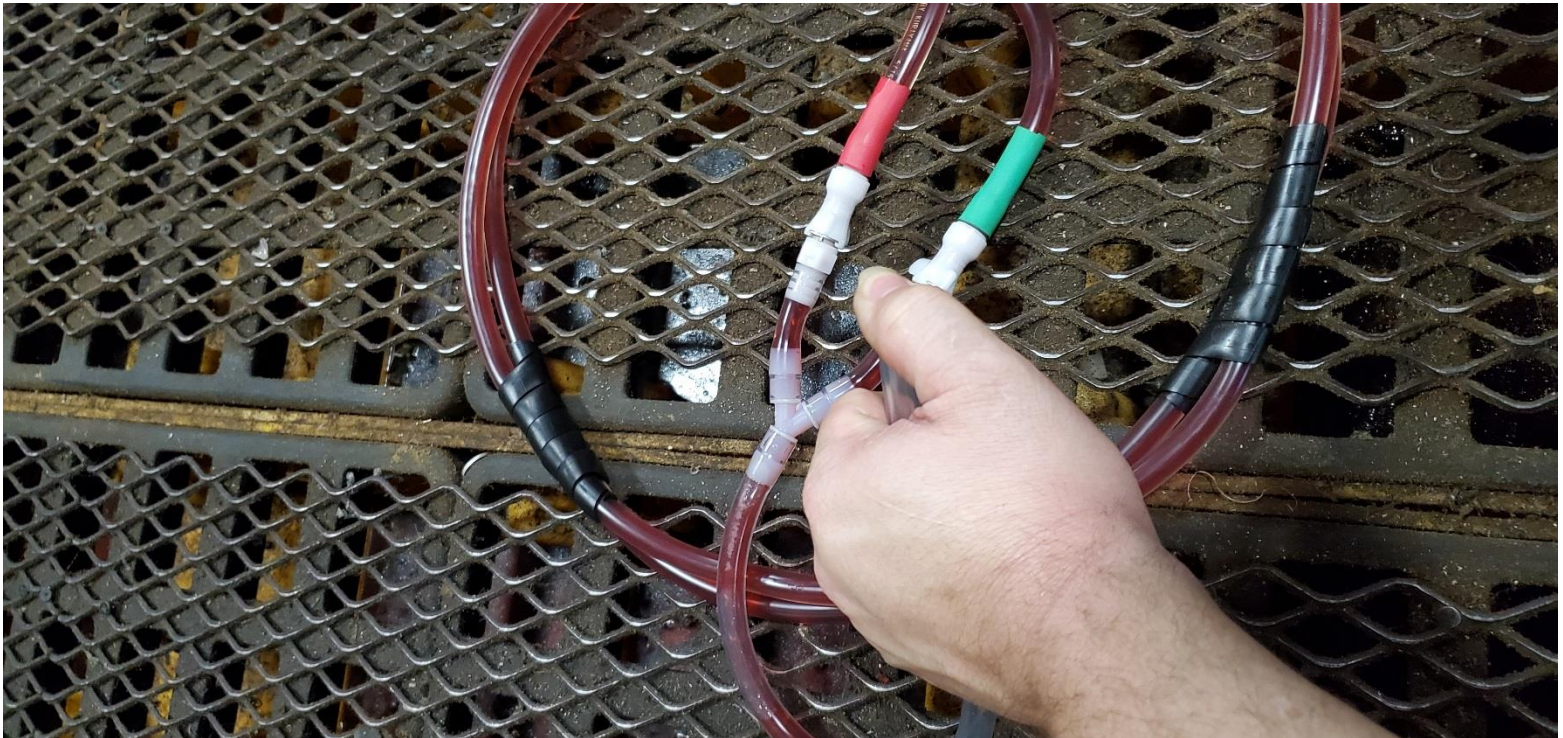
6. Pinch over or hold your finger over the end of the "Y" adapter.



7. Turn both Pump switches to the "ON" position.



8. Let fluid flow through both hoses. (The fluid will flow through the New service hose through the "Y" adapter hose and then back into the Waste service hose).



9. After  $\frac{1}{4}$  to  $\frac{1}{2}$  of the New Fluid Bottle has been pumped through, switch off the Pump that was working to see if the pump in question is now moving fluid. (If Fluid is moving through machine, machine is ready for service. If not repeat steps 7 – 9).
10. Turn Both pumps off and remove your finger from end of "Y" adapter or unpinch hose. (Make sure to point the end of the "Y" adapter into a bucket since there may be some pressure in the hose).
11. If Pump is still not moving fluid your machine will need a replacement pump.